

# WSRER SERIES

High elastic cushion rubber tyre on aluminium rim.

Hardness: 55 ± 3 Shore A

Temperature range: -30°C to +80°C

Maximum speed 10kph

(at this speed capacity reduced by 60%)



200-450kg

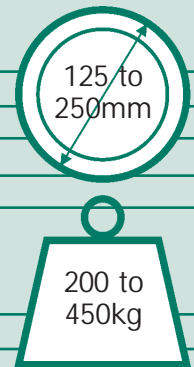
Wheel diameter (mm)	Tread width (mm)	Bore size (mm)	Hub length (mm)	Ball journal bearing
---------------------	------------------	----------------	-----------------	----------------------

## BLACK RUBBER

125	40	15	40	BZH125WSRERBJM15 200kg
150	47	20	45	BZH150WSRERBJM20 270kg
160	50	20	60	BZH160WSRERBJM20 270kg
200	50	20	60	BZH200WSRERBJM20 360kg
250	50	20	60	BZH250WSRERBJM20 450kg

## GREY RUBBER

125	40	15	40	BZH125WSRERGBJM15 200kg
150	47	20	45	BZH150WSRERGBJM20 270kg
160	50	20	60	BZH160WSRERGBJM20 270kg
200	50	20	60	BZH200WSRERGBJM20 360kg
250	50	20	60	BZH250WSRERGBJM20 450kg



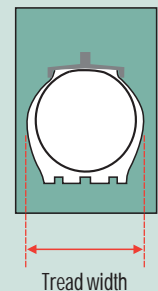
## CUSHION WHEELS (WSRER)

BIL have developed a new soft compound tyre that gives a really cushioned ride – which makes it especially good for carrying delicate items. So instead of using normal spring-loaded castors, our cushion wheels will do the job – and be much more cost-effective.

Applications would include hospitals – on food carts for instance, that have to be pushed over uneven surfaces between wards; in potteries for drying racks; on carts for use in residential areas to help reduce noise; and for delicate electrical equipment, medical or pharmaceutical trolleys.

## 55 shore A compared to the usual 75

- Lower cost than most spring-loaded castors
- An alternative to foam-filled tyres
- Rubber made of high elastic compound 55 shore A for quiet and smooth ride on rough and uneven floors
- Oval section tread profile for low rolling-resistance and easy operation
- Wheel centre made of die cast aluminium
- Precision ball bearings
- Operation speed up to 4 kph
- Temperature range -30°C to + 80°C
- Available in black or grey tyre



WSRER SERIES CUSHION WHEELS