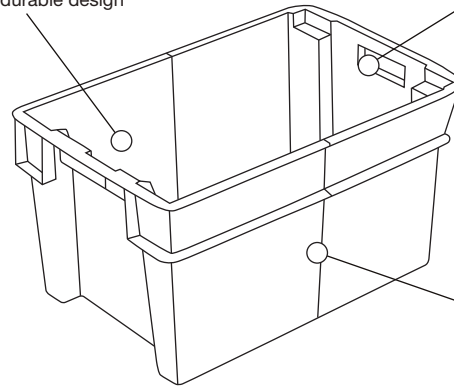




strong and durable design



ergonomic handles for safety and comfort

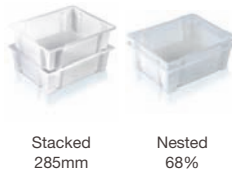
bi-colour for quick identification of stacked and nested positions

Containers that stack and nest through 180° rotation.

### ○ SN111104

One piece moulded 180° turn stacking and nesting container.  
suitable for:

- food processing
- meat products



Stacked  
285mm

Nested  
68%

#### Technical specification

Ext.Top Dim.	510 x 400 x 150mm
Int.Base Dim.	410 x 300 x 130mm
Load	90kg on base tray
Capacity	23 litres
Weight	1.1kg
Material	Polypropylene
Colour	Natural



### ○ SN700601

Stack and nest container. Lid is perforated ref. no. LI151401.  
suitable for:

- distribution of 'day old chicks'



Dolly  
DO484901



Lid  
LI151401



Stacked  
235mm

Nested  
50%

#### Technical specification

Ext.Top Dim.	600 x 400 x 120mm
Int.Base Dim.	268 x 362 x 111 x 2 off
Load	82kg on base tray
Capacity	22 litres
Weight	1.2kg
Material	Polypropylene
Colour	Black



### ○ SN600004

Stack and nest container by 180° turn method. Fully solid with clean lines.  
suitable for:

- parts storage
- food preparation



Dolly  
DO484901



Stacked  
352mm

Nested  
68%

#### Technical specification

Ext.Top Dim.	595 x 390 x 185mm
Int.Base Dim.	460 x 320 x 160mm
Load	112kg on base tray
Capacity	24 litres
Weight	1.3kg
Material	Polypropylene
Colour	Red



### ○ SN599004

Double sized stack and nest container by 180° turn method. Fully solid with clean lines.  
suitable for:

- handling of textiles



Dolly  
DO795904



Stacked  
721mm

Nested  
78%

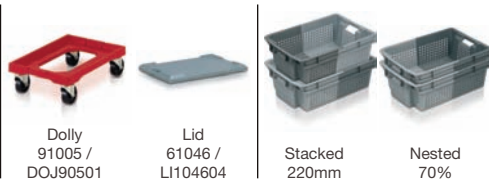
#### Technical specification

Ext.Top Dim.	800 x 597 x 370mm
Int.Base Dim.	650 x 490 x 350mm
Load	192kg on base tray
Capacity	110 litres
Weight	4.6kg
Material	Polypropylene
Colour	Red



### ○ 11018 / SN101804

Containers securely stack when loaded and nested, by turning through 180°, to save space when not in use. Bi-colour design clearly identifies stacking and nesting positions. Solid sides and base.



Dolly  
91005 /  
DOJ90501

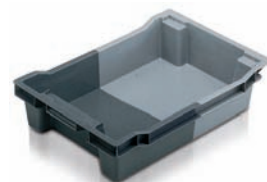
Lid  
61046 /  
LI104604

Stacked  
220mm

Nested  
70%

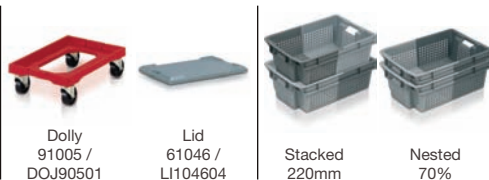
#### Technical specification

Ext. Dim. 600 x 400 x 117mm  
Int. Dim. 458 x 338 x 102mm  
Capacity 18 litres  
Weight 1.18kg  
Material HDPE  
Colour Grey/light grey



### ○ 11020 / SN102001

Containers securely stack when loaded and nested, by turning through 180°, to save space when not in use. Bi-colour design clearly identifies stacking and nesting positions. Ventilated sides and base.



Dolly  
91005 /  
DOJ90501

Lid  
61046 /  
LI104604

Stacked  
220mm

Nested  
70%

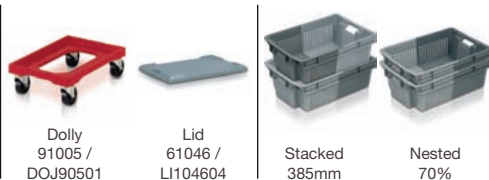
#### Technical specification

Ext. Dim. 600 x 400 x 117mm  
Int. Dim. 458 x 338 x 102mm  
Capacity 18 litres  
Weight 1.09kg  
Material HDPE  
Colour Grey/light grey



### ○ 11032 / SN110305

Containers securely stack when loaded and nested, by turning through 180°, to save space when not in use. Bi-colour design clearly identifies stacking and nesting positions. Solid sides and base.



Dolly  
91005 /  
DOJ90501

Lid  
61046 /  
LI104604

Stacked  
385mm

Nested  
70%

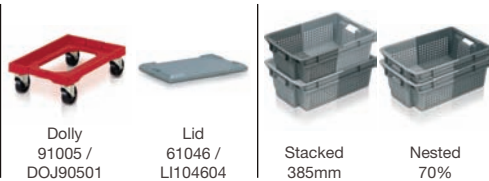
#### Technical specification

Ext. Dim. 600 x 400 x 200mm  
Int. Dim. 457 x 338 x 177mm  
Capacity 32 litres  
Weight 1.84kg  
Material HDPE  
Colour Grey/light grey,  
grey/red



### ○ 11034 / SN110301

Containers securely stack when loaded and nested, by turning through 180°, to save space when not in use. Bi-colour design clearly identifies stacking and nesting positions. Ventilated sides and base.



Dolly  
91005 /  
DOJ90501

Lid  
61046 /  
LI104604

Stacked  
385mm

Nested  
70%

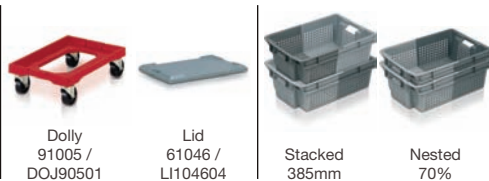
#### Technical specification

Ext. Dim. 600 x 400 x 200mm  
Int. Dim. 457 x 338 x 177mm  
Capacity 32 litres  
Weight 1.6kg  
Material HDPE  
Colour Grey/light grey



### ○ 11035 / SNR13506

Containers securely stack when loaded and nested, by turning through 180°, to save space when not in use. Bi-colour design clearly identifies stacking and nesting positions. Solid base and ventilated sides.



Dolly  
91005 /  
DOJ90501

Lid  
61046 /  
LI104604

Stacked  
385mm

Nested  
70%

#### Technical specification

Ext. Dim. 600 x 400 x 200mm  
Int. Dim. 457 x 338 x 177mm  
Capacity 33 litres  
Weight 1.71kg  
Material HDPE  
Colour Grey/light grey



### ○ 11037 / SN103701

Containers securely stack when loaded and nested, by turning through 180°, to save space when not in use. Ventilated sides and base.



Dolly  
91005 /  
DOJ90501

Lid  
61046 /  
LI104604

Stacked  
457mm

Nested  
68%

#### Technical specification

Ext. Dim. 600 x 400 x 236mm  
Int. Dim. 460 x 340 x 205mm  
Capacity 37 litres  
Weight 1.64kg  
Material HDPE  
Colour Orange



## ○ 11051 / SN105105

Containers securely stack when loaded and nested, by turning through 180°, to save space when not in use. Bi-colour design clearly identifies stacking and nesting positions. Solid sides and base.



Dolly  
91005 /  
DOJ90501



Lid  
61046 /  
LH104604



Stacked  
585mm

Nested  
70%

### Technical specification

Ext. Dim.	600 x 400 x 300mm
Int. Dim.	460 x 340 x 270mm
Capacity	50 litres
Weight	2.3kg
Material	HDPE
Colour	Grey/light grey, grey/red



## ○ 11053 / SNR15306

Containers securely stack when loaded and nested, by turning through 180°, to save space when not in use. Bi-colour design clearly identifies stacking and nesting positions. Solid base, ventilated sides.



Dolly  
91005 /  
DOJ90501



Lid  
61046 /  
LH104604



Stacked  
585mm

Nested  
70%

### Technical specification

Ext. Dim.	600 x 400 x 300mm
Int. Dim.	460 x 340 x 270mm
Capacity	50 litres
Weight	2.27kg
Material	HDPE
Colour	Grey/light grey



## ○ 11052 / SN105201

Containers securely stack when loaded and nested, by turning through 180°, to save space when not in use. Bi-colour design clearly identifies stacking and nesting positions. Ventilated sides and base.



Dolly  
91005 /  
DOJ90501



Lid  
61046 /  
LH104604



Stacked  
585mm

Nested  
70%

### Technical specification

Ext. Dim.	600 x 400 x 300mm
Int. Dim.	460 x 340 x 270mm
Capacity	50 litres
Weight	2.1kg
Material	HDPE
Colour	Grey/light grey



## ○ 11065 / SN106505

Containers securely stack when loaded and nested, by turning through 180°, to save space when not in use. Bi-colour design clearly identifies stacking and nesting positions. Solid sides and base.



Dolly  
91005 /  
DOJ90501



Lid  
61046 /  
LH104604



Stacked  
785mm

Nested  
70%

### Technical specification

Ext. Dim.	600 x 400 x 400mm
Int. Dim.	460 x 340 x 370mm
Capacity	70 litres
Weight	3.06kg
Material	HDPE
Colour	Grey/light grey



## ○ 11066 / SN106601

Containers securely stack when loaded and nested, by turning through 180°, to save space when not in use. Bi-colour design clearly identifies stacking and nesting positions. Ventilated sides and base.



Dolly  
91005 /  
DOJ90501



Lid  
61046 /  
LH104604



Stacked  
785mm

Nested  
70%

### Technical specification

Ext. Dim.	600 x 400 x 400mm
Int. Dim.	460 x 340 x 370mm
Capacity	70 litres
Weight	2.65kg
Material	HDPE
Colour	Grey



## ○ 11067 / SNR16706

Containers securely stack when loaded and nested, by turning through 180°, to save space when not in use. Bi-colour design clearly identifies stacking and nesting positions. Solid base, ventilated sides.



Dolly  
91005 /  
DOJ90501



Lid  
61046 /  
LH104604



Stacked  
785mm

Nested  
70%

### Technical specification

Ext. Dim.	600 x 400 x 400mm
Int. Dim.	460 x 340 x 370mm
Capacity	70 litres
Weight	2.75kg
Material	HDPE
Colour	Grey



○ 12035 / SN203505

Containers stack securely when loaded and nest, by turning through 180°, to save space when not in use.



Stacked  
520mm

Nested  
70%

Technical specification

Ext. Dim.	500 x 400 x 270mm
Int. Dim.	370 x 340 x 240mm
Capacity	35 litres
Weight	1.8kg
Material	HDPE
Colour	White



○ 11044 / SN104405

Containers stack securely when loaded and nest, by turning through 180°, to save space when not in use.



Stacked  
360mm

Nested  
70%

Technical specification

Ext. Dim.	755 x 435 x 190mm
Int. Dim.	680 x 360 x 170mm
Capacity	44 litres
Weight	2.25kg
Material	HDPE
Colour	Red



○ 11060 / SN106005

Containers stack securely when loaded and nest, by turning through 180°, to save space when not in use.



Stacked  
520mm

Nested  
70%

Technical specification

Ext. Dim.	800 x 450 x 270mm
Int. Dim.	620 x 370 x 230mm
Capacity	60 litres
Weight	3.68kg
Material	HDPE
Colour	Grey/red



○ 12070 / SN207005

Containers stack securely when loaded and nest, by turning through 180°, to save space when not in use.



Stacked  
564mm

Nested  
68%

Technical specification

Ext. Dim.	800 x 450 x 292mm
Int. Dim.	620 x 370 x 257mm
Capacity	66 litres
Weight	4.06kg
Material	HDPE
Colour	Red



○ 11048 / SN104801

Containers stack securely when loaded and nest, by turning through 180°, to save space when not in use.



Stacked  
409mm

Nested  
49%

Technical specification

Ext. Dim.	665 x 460 x 212mm
Int. Dim.	625 x 400 x 194mm
Capacity	48 litres
Weight	2.45kg
Material	HDPE
Colour	Grey



○ 12061 / SN120604

Containers stack securely when loaded and nest, by turning through 180°, to save space when not in use.



Stacked  
520mm

Nested  
70%

Technical specification

Ext. Dim.	800 x 450 x 270mm
Int. Dim.	620 x 370 x 230mm
Capacity	60 litres
Weight	3.88kg
Material	HDPE
Colour	White



### ○ 11075 / SN107505

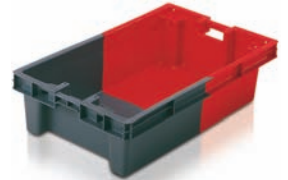
Containers stack securely when loaded and nest, by turning through 180°, to save space when not in use.



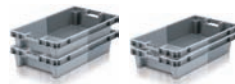
Stacked 450mm  
Nested 70%

#### Technical specification

Ext. Dim. 890 x 560 x 235mm  
Int. Dim. 695 x 475 x 200mm  
Capacity 75 litres  
Weight 4.15kg  
Material HDPE  
Colour Grey/red



### ○ 12A30



Stacked 270mm  
Nested 46mm

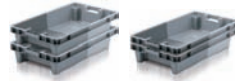
#### Technical specification

Ext. Dim. 800 x 450 x 150mm  
Int. Dim. 620 x 370 x 115mm  
Nested Height 46mm  
Capacity 30 litres  
Weight 2.5kg  
Colour Grey/light grey



### ○ 12A31

With external drainage.



Stacked 270mm  
Nested 46mm

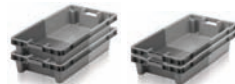
#### Technical specification

Ext. Dim. 800 x 450 x 150mm  
Int. Dim. 620 x 370 x 105mm  
Nested Height 46mm  
Capacity 30 litres  
Weight 2.5kg  
Colour Grey/light grey



### ○ 12A32

16 off 10mm Ø drainage holes, subject to minimum quantity.



Stacked 270mm  
Nested 46mm

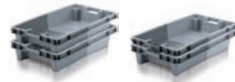
#### Technical specification

Ext. Dim. 800 x 450 x 150mm  
Int. Dim. 620 x 370 x 115mm  
Nested Height 46mm  
Capacity 30 litres  
Weight 2.5kg  
Colour Grey/light grey



### ○ 12041

With external drainage.



Stacked 360mm  
Nested 55mm

#### Technical specification

Ext. Dim. 800 x 450 x 190mm  
Int. Dim. 624 x 372 x 155mm  
Nested Height 55mm  
Capacity 38 litres  
Weight 2.6kg  
Colour Grey/light grey

