



AUDITORIA



SPORTS FACILITIES



COLLEGE

ALL RIGHTS RESERVED

Functional, universal auditorium or lecture theatre chair. The contemporary simplicity of the systems' design guarantees a combination of style and economy which makes it suitable for a wide range of premises and facilities.

College is ideal for lecture rooms, conference and training facilities, but also for a wide range of spectator viewing and sports environments.



AUDITORIA



SPORTS FACILITIES

General info

COLLEGE

Selected projects

Academy of Physical Education, Wrocław, Poland
 Adam Mickiewicz University, Poznań, Poland
 AGH University of Science and Technology Kraków, Poland
 College of Administration, Bielsko-Biala, Poland
 College of Education and Administration, Poznań
 Comprehensive Cancer Centre, Gliwice, Poland
 Cracow University of Technology, Poland
 Higher Education School, Jasło, Poland
 Opole University of Technology, Poland
 Pedagogical University of Kraków, Poland
 Poznań University of Life Sciences, Poland
 School of Economics and Law (WSEiP), Kielce, Poland
 The State Higher Vocational School in Gniezno, Poland
 The State Medical Higher Vocational School, Opole, Poland
 UMCS University, Lublin, Poland
 University of Silesia, Katowice
 Velodrom BGŻ Arena, Pruszków, Poland
 Wrocław University of Technology, Poland



Higher Education School, Jasło, Poland

→ More photos on www.forumseating.com

The College chair, produced in Nowy Styl Group factories, is supplied with a full two-year guarantee. Our experienced fitters will install the chairs quickly and efficiently anywhere in the EU.

Forum Seating provides professional post installation support through its guarantee and post-guarantee service. Free servicing is offered six monthly through the guarantee period.

Assembly options

Straight rows	Segmented curve	Free-standing	Individual seats or units	On the flat	Raked	Tiered
✓	✓	✓	✓	✓	—	✓

+ A riser mounted version is also available*

* See also "Measurements"

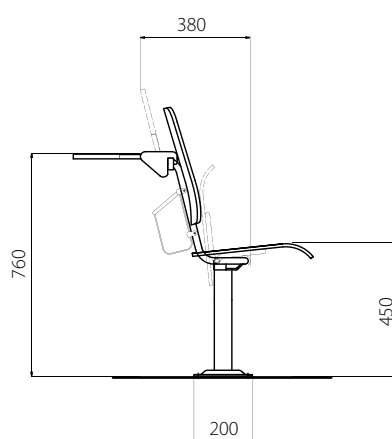
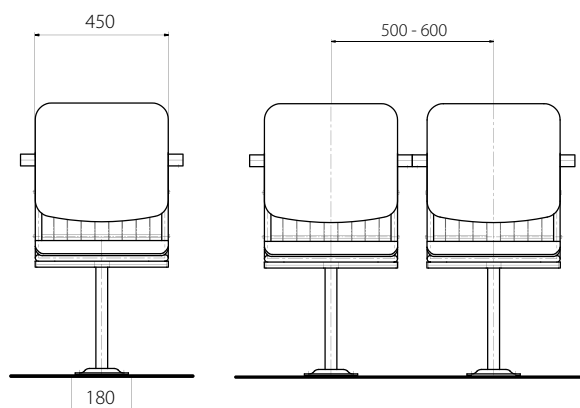
Measurements

The College seat is available with seat centres ranging from 500 mm to 600 mm.

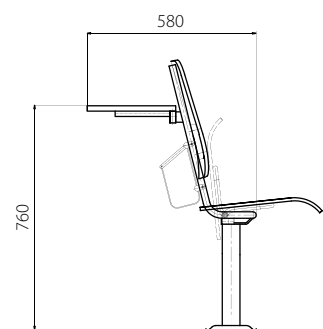
The depth and height depends on the height of the step.

Each project will be the subject of site visits and detailed discussion.

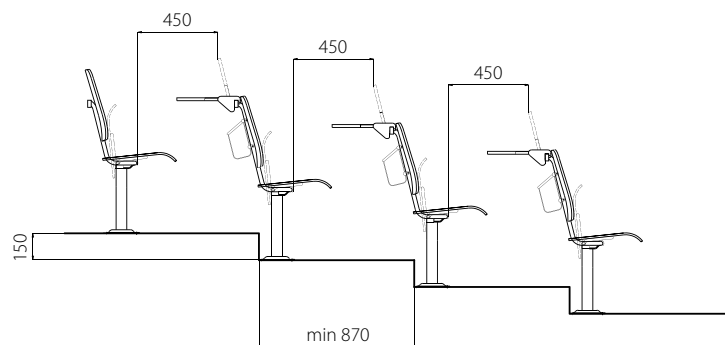
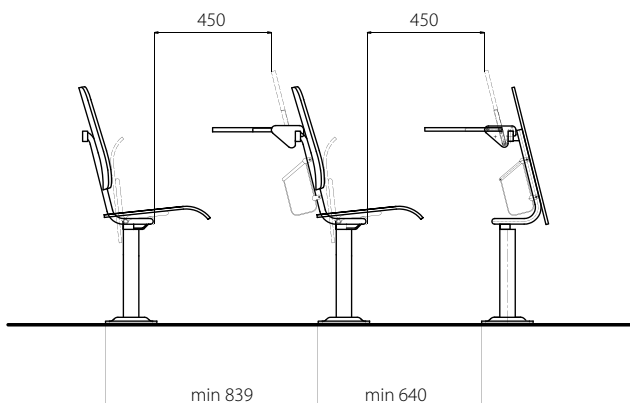
Measurements in mm.



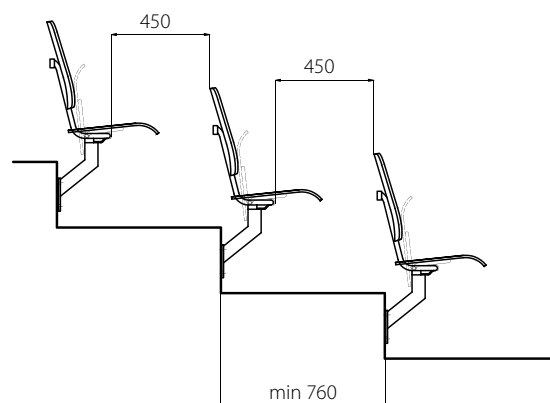
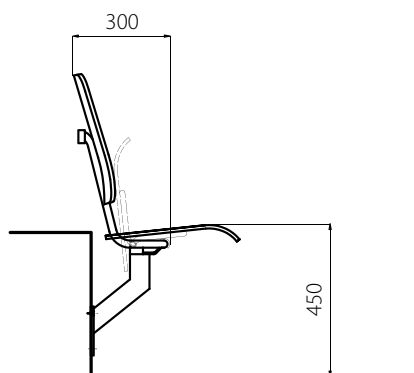
COLLEGE with folding shelf



COLLEGE permanently fitted shelf



NEW → Riser mounted College



Additional Equipment

- With a full range of options and accessories, College can be tailored to suit a wide variety of needs, making it comfortable for the user, whilst offering a durable, upgradable solution for many years to come*.

* See also "Additional equipment"

Seat advantages

- Ergonomic, with a waterfall front edge to maximize leg support and seating comfort*.

Options

- Plywood with upholstered pads or of high-quality beech plywood.

* See also "Technical Information"

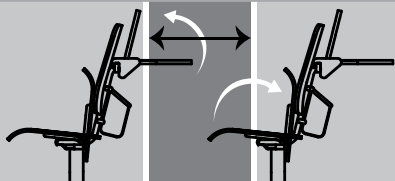


Load-bearing construction

- Durable frame made of powder coated steel.

Spring tip seat

- Concealed spring mechanism allows the seat to fold automatically, for maximum user safety and comfort. The mechanism is tested to 50 000 cycles.



Back and seat

- Durable, anatomically profiled seat and back provide a comfortable seating position.



- High quality, durable upholstery used for seat and back pads*.

* see „Technical Information“ below



Folding writing tablet

Made of ply wood; thickness: 14 mm, horizontally adjustable.



Fixed shelf

Made from melamine board; thickness: 16mm, permanently fitted.



Front modesty panel

Made from seven ply wood; thickness: 10 mm.



Basket

Steel, chromium-plated, durable and attractive basket for a briefcase, laptop or other small objects.

Technical information

- **Paints and varnishes:** metal components – powder coated or chrome plated; wooden components painted in water based lacquer and stained.
- **Upholstery:**

Xtreme Plus: 100% FR, resistance to abrasion 100 000 Martindale cycles; fire resistance: EN 1021 - 1 (cigarette); EN 1021 - 2 (match); BS 7176 Medium Hazard; BS 5852 Section 4 Crib 5; NF-P-503 M1; DIN 4102 B1; Class 1.

Lucy: 100% Polyester, resistance to abrasion 50 000 Martindale cycles; fire resistance: EN 1021- 1 (cigarette); EN 1021 – 2 (match); BS 7176 Low Hazard; NF-P-503 M1; DIN 4102 B1; BS 476 Class 1

Rembrandt / Oban: 100% Polyolefin, resistance to abrasion 40 000 Martindale cycles; fire resistance: EN 1021- 1 (cigarette).
- **Plywood:** profiled beech plywood class 1 (best quality), thickness: 12 mm.
- **Weight of the armchair:** 14,5 kg.

Certificates

- Strength and durability tested to EN 12727.
- Fire resistance (emission of toxic by products) PN -B-02855 standard.
- Fire resistance classification for the flammability of upholstered furniture, according to EN 1021-1, EN 1021- 2 standard, which classifies the product as fire resistant.

Wood finishes

High quality beech plywood stained and finished with ecological water based lacquer.

Colours shown in the catalogue may differ slightly from the actual fabric colours due to the limitations of the printing process.



beech

1.007



cognac

1.008



dark walnut



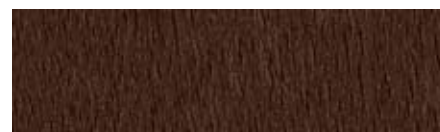
orange

1.010



mahogany

1.016



wenge

Upholstery textiles

Xtreme Plus: 100% FR, resistance to abrasion 100 000 Martindale cycles; fire resistance: EN 1021- 1(cigarette); EN 1021 – 2 (match); BS 7176 Medium Hazard; BS 5852 Section 4 Crib 5; NF-P-503 M1; DIN 4102 B1; Class 1.



XR161



XR005



XR077



XR076

Lucy: 100% Polyester, resistance to abrasion 50 000 Martindale cycles; fire resistance: EN 1021- 1 (cigarettes); EN 1021 – 2 (matches); BS 7176 Low Hazard; NF-P-503 M1; DIN 4102 B1; BS 476 Class 1.



LC131



LC130I



LC027



LC092



LC004



LC131



LC130I



LC027

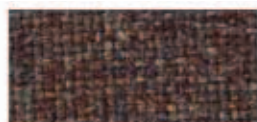
Rembrandt / Oban: 100% Polyolefin, resistance to abrasion 40 000 Martindale cycles; fire resistance: EN 1021- 1 (cigarette).



R07



R61



R36



R13



R65



R09



R66



R23