

- Plus points** • Contemporary design.  
 • Stylish, ergonomically designed, easy to grip handles.  
 • Metallic drawer shells.  
 • Available in 2 widths (32 and 42 cm) and 2 depths (60 and 80 cm).



**MERLIN**  
 Industrial Products LTD  
 Kingsley Close  
 Lee Mill Industrial Estate  
 Ivybridge, Devon. PL21 9LL  
 Call 0845 124 9955  
 Fax 0845 125 9955  
 Sales@mipl.org.uk  
 www.office-furniture.org.uk

**metallic pedestals**

- Mobile or desk height.
- Pen tray in the top drawer.
- Selective drawer opening system.
- Central locking. Flexible numbered key with cover (master key available on request).
- Filing drawer fitted with 5th castor to prevent it from tipping over.
- Optional extra for mobile pedestals: 25 mm thick melamine-faced decorative tops, available with straight edges only.
- For desk height pedestals, 25 mm thick decorative tops are available in 2 choices of surface coating:
  - melamine: tops with straight edges available in a light grey, beech, cherry or pear finish, tops with ergosoft edges available in cherry or pear only,
  - HPC: tops with straight edges only, available in a light oak, light grey, beech, cherry, pear or French apple finish.

Choices of colour for mobile pedestals (tops are optional)

	AL
	AN
	GR

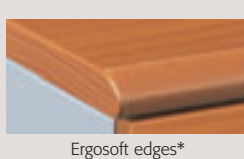
Choices of finish for desk height pedestals

	AL
	AN
	GR

Edges

Edges	CH	GR	HE	DM	Pi	PF
Straight + HPC	L HDCH	L HDGR	L HDHE	L HDDM	L HDPI	L HDPF
Straight + melamine	—	L BDGR	L BDHE	L BDDM	L BDPI	—
Ergosoft + melamine	—	—	—	L BEDM	L BEPI	—
Straight + HPC	A HDCH	A HDGR	A HDHE	A HDDM	A HDPI	A HDPF
Straight + melamine	—	A BDGR	A BDHE	A BDDM	A BDPI	—
Ergosoft + melamine	—	—	—	A BEDM	A BEPI	—
Straight + HPC	G HDCH	G HDGR	G HDHE	G HDDM	G HDPI	G HDPF
Straight + melamine	—	G BDGR	G BDHE	G BDDM	G BDPI	—
Ergosoft + melamine	—	—	—	G BEDM	G BEPI	—

3 types of edge available according to model



\* for desk height pedestals only.

**Nomad metallic pedestals**

- Castors, ø 80 mm.
- Pen tray in the top drawer.
- Filing drawer fitted with 5th castor to prevent it from tipping over.
- Selective drawer opening system.
- Central locking. Flexible numbered key with cover (master key available on request).

Shell 2 colours

	AL
	AN



CPU holders, see p.144

**Budget metallic pedestals**

- Mobile or desk height.
- Pen tray in the top drawer.
- Selective drawer opening system.
- Central locking.
- Aluminium or graphite grey textured paint.
- For desk height pedestals, 25 mm thick melamine-faced decorative tops are available with straight edges only.

Choices of finish for mobile pedestals

	AL
	AN

Choices of finish for desk height pedestals

	AL
	AN

4 choices of top finish for desk height pedestals

L DGR	L DHE	L DDM	L DPI
A DGR	A DHE	A DDM	A DPI

**metallic pedestals with melamine-faced drawer fronts and top**



- Plus points**
- Attractive combination of metal and melamine.
  - Personalizable handles.
  - Drawer shells in ABS.
  - Filing drawers mounted on ball bearing runners.
  - Silent drawer movement.

- Mobile or desk height.
- Handles to match the shell colour.
- Pen tray in the top drawer.
- Selective drawer opening system - drawers fitted with sheathed runners.
- Central locking. Flexible numbered key with cover (master key available on request).
- Filing drawer fitted with 5th castor to prevent it from tipping over.
- Mobile pedestals: melamine-faced drawer fronts and tops.
- Desk height pedestals: melamine-faced drawer fronts, HPC tops with straight edges.
- Optional:
  - handles, see price guide on page 101.

Shell

	AL
	AN

Edges

Straight	L DCH	L DPI	L DPF
Straight	A DCH	A DPI	A DPF

Optional handles

Model 1 Q COPO1 AL	Model 2 Q COPO2 AL	Model 3 Q COPO3 AL
Model 4 Q COPO4 AL	Model 5 Q COPO5 AL or AN	

**Melamine pedestals**



- Plus points**
- The warmth and elegance of melamine.
  - Personalizable handles.
  - Drawer shells made from MDF covered in PVC.

2 types of edge

Straight	Ergosoft* * for desk height pedestals only.

Handles

	AL
	AN

Edges

Straight	L DGR	L DHE	L DDM	L DPI
Ergosoft*	—	—	L EDM	L EPI
Straight	A DGR	A DHE	A DDM	A DPI
Ergosoft*	—	—	A EDM	A EPI

- Mobile or desk height.
- Standard handles in aluminium or graphite grey.
- Pen tray in the top drawer.
- Selective drawer opening system.
- Central locking. Flexible numbered key with cover (master key available on request).
- Decorative tops:
  - for mobile pedestals: melamine-faced with straight edges only,
  - for desk height pedestals: melamine-faced with straight or ergosoft edges.
- Optional: 5 alternative models of handle (see price guide on p 101).

Optional handles

Model 1 Q COPO1 AL	Model 2 Q COPO2 AL	Model 3 Q COPO3 AL
Model 4 Q COPO4 AL	Model 5 Q COPO5 AL or AN	

For price guide and optional extras, see pages 100 to 101.

**Metallic pedestals.** For choices of finish, see table at the top of page 98.

Mobile pedestals, width 32 cm, depth 60 cm. (Not available in a GR finish).



2 drawers (1 box drawer, 1 filing drawer) Q C1R623 + col. £ 169

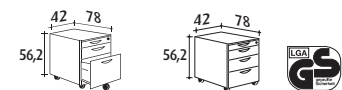
3 box drawers Q C1R633 + col. £ 169

Mobile pedestals, width 42 cm, depth 60 cm. See options: ① ② ③ ④

2 drawers (1 box drawer, 1 filing drawer)  
Filing drawer fitted with 5th castor to prevent it from tipping over. Q C1R62 + col. £ 179

3 box drawers Q C1R63 + col. £ 179

Mobile pedestals, width 42 cm, depth 80 cm, complete with mini-drawer. GS label. (Not available in a GR finish).

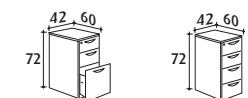


2 drawers (1 box drawer, 1 filing drawer) plus mini-drawer Q C1R82 + col. £ 365

3 box drawers Q C1R83 + col. £ 365

Desk height pedestals, width 42 cm. See options: ② ③ ④ ⑦

Depth 60 cm



3 drawers (2 box drawers, 1 filing drawer) melamine top with straight edges Q C1H63 + fin. £ 285

melamine top with ergosoft edge Q C1H63 + fin. £ 320

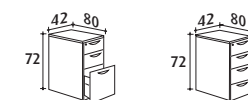
HPC top with straight edges Q C1H63 + fin. £ 295

4 box drawers melamine top with straight edges Q C1H64 + fin. £ 285

melamine top with ergosoft edge Q C1H64 + fin. £ 320

HPC top with straight edges Q C1H64 + fin. £ 295

Depth 80 cm



3 drawers (2 box drawers, 1 filing drawer) melamine top with straight edges Q C1H83 + fin. £ 305

melamine top with ergosoft edge Q C1H83 + fin. £ 340

HPC top with straight edges Q C1H83 + fin. £ 315

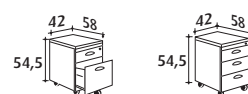
4 box drawers melamine top with straight edges Q C1H84 + fin. £ 305

melamine top with ergosoft edge Q C1H84 + fin. £ 340

HPC top with straight edges Q C1H84 + fin. £ 315

**Metallic pedestals with melamine-faced drawer fronts and top.** For choices of finish, see table at the bottom of page 98.

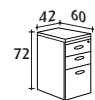
Mobile pedestals, width 42 cm, depth 60 cm. Tops with straight edges. See options: ② ④ ⑤ ⑥



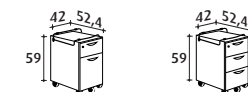
2 drawers (1 box drawer, 1 filing drawer) Q C2R62 + fin. £ 325

3 box drawers Q C2R63 + fin. £ 325

Desk height pedestals, width 42 cm. Tops with straight edges. See options: ② ④ ⑤ ⑥ ⑦

Depth 60 cm  
3 drawers (2 box drawers, 1 filing drawer) Q C2H63 + fin. £ 410Depth 80 cm  
3 drawers (2 box drawers, 1 filing drawer) Q C2H83 + fin. £ 455**Nomad metallic pedestals.** For choices of finish, see table at the top of page 99.

Mobile pedestals, width 42 cm, depth 60 cm. See options: ② ③ ④



2 drawers (1 box drawer, 1 filing drawer) Q C1N62 + col. £ 279

3 box drawers Q C1N63 + col. £ 279

**Budget metallic pedestals.** For choices of finish, see table at the top of page 99.

Mobile pedestals, width 42 cm, depth 60 cm.



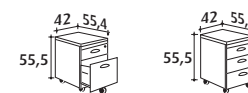
2 drawers (1 box drawer, 1 filing drawer) Q C3R62 + AL or AN £ 139

3 box drawers Q C3R63 + AL or AN £ 139

Desk height pedestals, width 42 cm. Melamine-faced decorative tops with straight edges. See options: ⑦

Depth 60 cm :  
3 drawers (2 box drawers, 1 filing drawer) Q C3H63 + fin. £ 205Depth 80 cm :  
3 drawers (2 box drawers, 1 filing drawer) Q C3H83 + fin. £ 245**Melamine pedestals.** For choices of finish, see table at the bottom of page 99.

Mobile pedestals, width 42 cm, depth 60 cm. Tops with straight edges. See options: ② ④ ⑥



2 drawers (1 box drawer, 1 filing drawer) M C4R62 + fin. £ 179

3 box drawers M C4R63 + fin. £ 179

Desk height pedestals, width 42 cm. See options: ② ④ ⑥ ⑦

Depth 60 cm. 3 drawers (2 box drawers, 1 filing drawer)  
Top with straight edges M C4H63 + fin. £ 285  
Top with ergosoft edge M C4H63 + fin. £ 320Depth 80 cm. 3 drawers (2 box drawers, 1 filing drawer)  
Top with straight edges M C4H83 + fin. £ 305  
Top with ergosoft edge M C4H83 + fin. £ 339**Optional extras**

① Decorative tops for metallic pedestals. D 60 cm, Width 43 cm. Melamine-faced with straight edges. Available in a DCH, DGR, DHE, DDM, DPI or DPF finish.



Q C0T0643 + fin. £ 26

② Sloping dividers for all pedestals 42 cm in width. In black. Sold in sets of 5.



Q C0S0 NR £ 20

③ Vertical dividers for metallic pedestals 42 cm in width only. Sold in sets of 3.



Q C0SV NR £ 22

④ ABS pen tray for all pedestals 42 cm in width. In black.



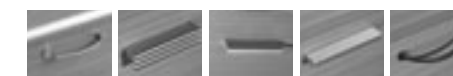
Q C0PL NR £ 5

⑤ Vertical dividers for metallic pedestals with melamine-faced drawer fronts 42 cm in width only. Sold in sets of 3.



Q C2SV NR £ 10

⑥ Optional handles for melamine pedestals and metallic pedestals with melamine-faced drawer fronts and top.



Model 1 Q C0PO1 AL £ 7

Model 2 Q C0PO2 AL £ 15

Model 3 Q C0PO3 AL £ 8

Model 4 Q C0PO4 AL £ 15

Model 5 Q C0PO5 + AL or AN £ 7

⑦ Set of 8 spacers : designed to raise the height of desk height pedestals by 20 or 40 mm



Q C0KE NR £ 35