

## Cupboard Workbenches



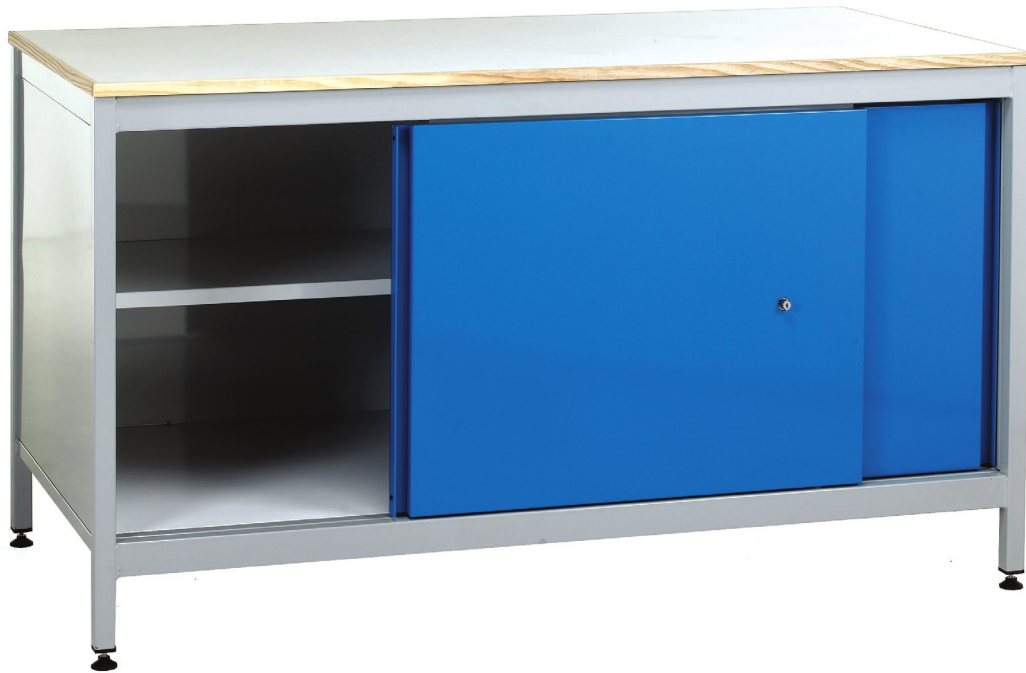
Max Load  
300 Kg



British  
Made

Medium duty workbenches fitted with full length sliding door cupboard.

Cupboard Workbenches



RE8-LA

### Colours

All above bench accessories and cupboard and drawer carcass:

 Light Grey epoxy

Drawer fronts and doors available in choice of:

 Blue

 Red

 Dark Grey

Blue supplied if none specified.

## Fully boxed bench with sliding doors and half depth central shelf

Storage / cupboard benches are based on the square 4-leg medium duty 456 range of workbenches. Full range of sizes and worktops available. Cupboards have single fixed steel shelf.

### Construction:

Welded steel square and rectangular section frame. (14 and 16swg to BS6323)

### Worktop specifications:

Plastic edge lipping is available as an option for laminate or vinyl worktops.



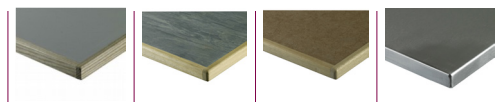
SSCB5

### Finish:

All frames finished in light grey epoxy (colour choice for doors)

**All stainless steel model - see page 166.**

## Worktop Options



Size		Standard Worktops			
L mm	W mm	Laminate	Vinyl	MDF	Stainless
1200	600	RE1-LA	RE1-V	RE1-M	RE1-SS
	750	RE2-LA	RE2-V	RE2-M	RE2-SS
	900	RE3-LA	RE3-V	RE3-M	RE3-SS
1500	600	RE4-LA	RE4-V	RE4-M	RE4-SS
	750	RE5-LA	RE5-V	RE5-M	RE5-SS
	900	RE6-LA	RE6-V	RE6-M	RE6-SS
1800	600	RE7-LA	RE7-V	RE7-M	RE7-SS
	750	RE8-LA	RE8-V	RE8-M	RE8-SS
	900	RE9-LA	RE9-V	RE9-M	RE9-SS