

RANGES

WRN / WSRN

∅ 50-250mm  50-500kg



Pages | 270

WSTPR / WSRNG

∅ 80-200mm  90-500kg



Pages | 271

WER

∅ 75-300mm  50-800kg



Pages | 272

WSRER

∅ 100mm  60-500kg



Pages | 273

WCR / WCUBJ

∅ 100-400mm  140-1050kg



Pages | 274

WMCKU

∅ 250-457mm  195-1450kg



Pages | 275



ELASTIC RUBBER WRN / WSRN SERIES



50-500kg



50-250mm

75 Shore A Blue Elastic Rubber On Nylon							65 Shore A Blue High Quality Elastic Rubber On Nylon						
-20°C to +60°C Max Speed 4kph							-30°C to +80°C Max Speed 4kph						
Dia (mm)	Bearing	Code	Tread (mm)	Hub (mm)	Bore (mm)	Load (kg)	Bearing	Code	Tread (mm)	Hub (mm)	Bore (mm)	Load (kg)	
50	-	-	-	-	-	-	□	BZMM50WSRN	20	24	6.4	50	
65	-	-	-	-	-	-	□	BZMH65WSRN	35	40	12	100	
75	-	-	-	-	-	-	□	BZMH75WSRN	35	40	12	130	
80	≡	BZML80WRNRB	34	40	12	100	□	BZMH80WSRN	35	40	12	150	
	-	-	-	-	-	-	≡	BZMH80WSRNRB	35	40	12	150	
	-	-	-	-	-	-	⊞	BZMH80WSRNBJM8	35	41	8	150	
100	□	BZMM100WRN	36	40	12	160	□	BZMM100WSRN	36	40	12	200	
	≡	BZMM100WRNRB	36	40	12	160	≡	BZMM100WSRNRB	36	40	12	200	
	≡	BZMH100WRNRB	36	50	15	200	⊞	BZMM100WSRNBJM8	36	41	8	200	
	□	BZH100WRN15	38	48	15	250	≡	BZH100WSRNRB15	36	49	15	200	
	≡	BZH100WRNRB15	38	48	15	250	⊞	BZH100WSRNBJM10	36	50	10	200	
	-	-	-	-	-	-	⊞	BZH100WSRNBJM12	50	63	12	275	
125	□	BZMH125WRN	36	45	15	200	≡	BZMH125WSRNRB	36	45	15	250	
	≡	BZMH125WRNRB	36	45	15	200	⊞	BZMH125WSRNBJM10	36	45	10	250	
	≡	BZHL125WRNRB15	36	51	15	200	≡	BZH125WSRNRB15	36	49	15	250	
	≡	BZH125WRNRB15	40	50	15	250	⊞	BZH125WSRNBJM10	36	50	10	250	
	-	-	-	-	-	-	⊞	BZH125WSRNBJM12	50	60	12	275	
150	≡	BZH150WRNRB	50	60	20	300	≡	BZMH150WSRNRB	40	50	20	300	
	-	-	-	-	-	-	⊞	BZMH150WSRNBJM10	40	50	10	300	
160	≡	BZH160WRNRB	50	60	20	300	≡	BZH160WSRNRB	50	60	20	400	
	⊞	BZH160WRNBJM20	50	60	20	300	⊞	BZH160WSRNBJM20	50	60	20	400	
200	≡	BZH200WRNRB	50	60	20	400	≡	BZH200WSRNRB	50	60	20	500	
	⊞	BZH200WRNBJM20	50	60	20	400	⊞	BZH200WSRNBJM20	50	60	20	500	
250	≡	BZH250WRNRB	50	60	25	500	-	-	-	-	-	-	
	⊞	BZH250WRNBJM25	60	60	25	500	-	-	-	-	-	-	

*PAH-free rubber to conform to EU-directive 2005/69/EC

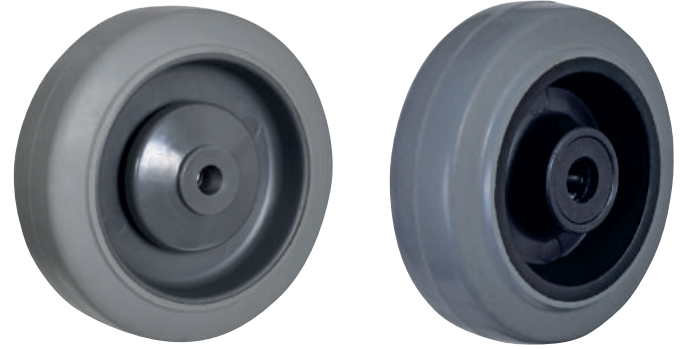
Wheel Retainers



Axle Diameter (mm)

8	WRDM8
10	WRDM10
12	WRDM12
15	WRDM15
20	WRDM20
25	WRDM25

ELASTIC RUBBER WSTPR / WSRNG SERIES



90-500kg



80-200mm

Dia (mm)	Bearing	Code	Tread (mm)	Hub (mm)	Bore (mm)	Load (kg)	65 Shore A Grey Elastic Thermoplastic Rubber On Polypropylene -20°C to +60°C Max Speed 4kph						65 Shore A Grey High Quality Elastic Rubber On Nylon -30°C to +80°C Max Speed 3kph					
							Bearing	Code	Tread (mm)	Hub (mm)	Bore (mm)	Load (kg)	Bearing	Code	Tread (mm)	Hub (mm)	Bore (mm)	Load (kg)
80	ECB	BZMM80WSTPRBJM8	32	42	8	90	ECB	BZMH80WSRNGRB	35	40	12	150	ECB	BZMH80WSRNGBJM8	35	41	8	150
	-	-	-	-	-	-	ECB	BZMM100WSRNGRB	36	40	12	200	ECB	BZMM100WSRNGBJM8	36	41	8	200
100	ECB	BZMM100WSTPRBJM8	32	42	8	100	ECB	BZMM100WSRNGRB	36	40	12	200	ECB	BZMM100WSRNGBJM8	36	41	8	200
	-	-	-	-	-	-	ECB	BZMH100WSRNGRB15	36	49	15	200	ECB	BZMH100WSRNGBJM15	36	49	15	200
	-	-	-	-	-	-	ECB	BZMM125WSRNGRB	36	45	15	250	ECB	BZMM125WSRNGBJM10	36	45	10	250
	-	-	-	-	-	-	ECB	BZMH125WSRNGRB15	36	49	15	250	ECB	BZMH125WSRNGBJM15	36	49	15	250
125	ECB	BZMM125WSTPRBJM10	32	42	10	120	ECB	BZMM125WSRNGRB	36	45	15	250	ECB	BZMM125WSRNGBJM10	36	45	10	250
	ECB	BZMH125WSTPRBJM10	40	47	10	150	ECB	BZMH125WSRNGRB15	36	49	15	250	ECB	BZMH125WSRNGBJM15	36	49	15	250
	-	-	-	-	-	-	ECB	BZMM150WSRNGRB	40	50	20	300	ECB	BZMM150WSRNGBJM15	40	50	15	300
	-	-	-	-	-	-	ECB	BZMH150WSRNGRB15	40	50	15	300	ECB	BZMH150WSRNGBJM15	40	50	15	300
150	-	-	-	-	-	-	ECB	BZMM160WSRNGRB	50	60	20	400	ECB	BZMM160WSRNGBJM20	50	60	20	400
	-	-	-	-	-	-	ECB	BZMH160WSRNGRB15	50	60	20	400	ECB	BZMH160WSRNGBJM15	50	60	20	400
160	ECB	BZH160WSTPRBJM12	40	63	12	200	ECB	BZMM200WSRNGRB	50	60	20	500	ECB	BZMM200WSRNGBJM20	50	60	20	500
	-	-	-	-	-	-	ECB	BZMH200WSRNGRB15	50	60	20	500	ECB	BZMH200WSRNGBJM15	50	60	20	500
200	ECB	BZH200WSTPRBJM12	40	63	12	220	ECB	BZMM200WSRNGRB	50	60	20	500	ECB	BZMM200WSRNGBJM20	50	60	20	500
	-	-	-	-	-	-	ECB	BZMH200WSRNGRB15	50	60	20	500	ECB	BZMH200WSRNGBJM15	50	60	20	500

*PAH-free rubber to conform to EU-directive 2005/69/EC

*PAH-free rubber to conform to EU-directive 2005/69/EC

Wheel Retainers



Axle Diameter (mm)	Code
8	WRDM8
10	WRDM10
12	WRDM12
15	WRDM15
20	WRDM20

ELASTIC RUBBER WER SERIES



50-800kg



75-300mm



Dia (mm)	Bearing	Code	Tread (mm)	Hub (mm)	Bore (mm)	65 Shore A Black High Quality Elastic Rubber On Aluminium		Bearing	Code	Tread (mm)	Hub (mm)	Bore (mm)	65 Shore A Grey High Quality Elastic Rubber On Aluminium	
						Load 4kph (kg)	Load 10kph (kg)						Load 4kph (kg)	Load 10kph (kg)
75	ECB	BZM75WERBJM12	32	29	12	125	50	-	-	-	-	-	-	-
80	ECB	BZH80WERBJM15	40	40	15	180	72	ECB	BZH80WERGBJM15	40	40	15	180	72
100	ECB	BZH100WERBJM15	40	40	15	200	80	ECB	BZH100WERGBJM15	40	40	15	200	80
	ECB	BZXH100WERBJM15	50	60	15	250	100	-	-	-	-	-	-	-
125	ECB	BZH125WERBJM15	40	45	15	250	100	ECB	BZH125WERGBJM15	40	45	15	250	100
	ECB	BZH125WERBJM20	50	60	20	270	108	-	-	-	-	-	-	-
150	ECB	BZH150WERBJM15	40	50	15	300	120	-	-	-	-	-	-	-
	ECB	BZH150WERBJM20	50	60	20	350	140	-	-	-	-	-	-	-
160	ECB	BZH160WERBJM20	50	60	20	400	160	ECB	BZH160WERGBJM20	50	60	20	400	160
180	ECB	BZH180WERBJM20	50	60	20	450	180	-	-	-	-	-	-	-
200	ECB	BZH200WERBJM20	50	60	20	500	200	ECB	BZH200WERGBJM20	50	60	20	500	200
250	ECB	BZH250WERBJM20	50	60	20	650	260	-	-	-	-	-	-	-
	ECB	BZXH250WERBJM25	75	83	25	750	300	-	-	-	-	-	-	-
300	ECB	BZH300WERBJM30	75	83	30	800	320	-	-	-	-	-	-	-

*PAH-free rubber to conform to EU-directive 2005/69/EC

*PAH-free rubber to conform to EU-directive 2005/69/EC

Wheel Retainers



Axle Diameter (mm)	Code
12	WRDM12
15	WRDM15
20	WRDM20
25	WRDM25

ELASTIC RUBBER WSRER SERIES

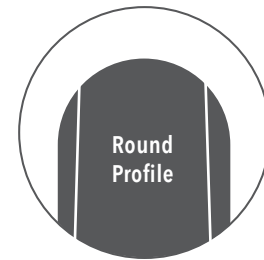


60-500kg



100-250mm

- Lower cost than most spring-loaded castors
- An alternative to foam-filled tyres
- Rubber made of high elastic compound 55 shore A for a quiet and smooth ride on rough and uneven floors
- Oval section tread profile for low rolling resistance and easy operation
- Wheel centre made of diecast aluminium
- Precision ball bearings
- Operation speed up to 10 kph
- Temperature range -30°C to +80°C
- Available in black or grey tyre



Dia (mm)	Bearing	Code	Tread (mm)	Hub (mm)	Bore (mm)	55 Shore A Black High Quality Elastic Ergonomic Rubber On Aluminium	
						Load 4kph (kg)	Load 10kph (kg)
100	ECB	BZH100WSRERBJM15	40	40	15	150	60
125	ECB	BZH125WSRERBJM15	40	40	15	200	80
150	ECB	BZH150WSRERBJM20	47	45	20	270	108
160	ECB	BZH160WSRERBJM20	50	60	20	250	100
200	ECB	BZH200WSRERBJM20	50	60	20	380	152
250	ECB	BZH250WSRERBJM20	50	60	20	500	200

*PAH-free rubber to conform to EU-directive 2005/69/EC

Dia (mm)	Bearing	Code	Tread (mm)	Hub (mm)	Bore (mm)	55 Shore A Grey High Quality Elastic Ergonomic Rubber On Aluminium	
						Load 4kph (kg)	Load 10kph (kg)
100	ECB	BZH100WSRERGBJM15	40	40	15	150	60
125	ECB	BZH125WSRERGBJM15	40	40	15	200	80
150	ECB	BZH150WSRERGBJM20	47	45	20	270	108
160	ECB	BZH160WSRERGBJM20	50	60	20	250	100
200	ECB	BZH200WSRERGBJM20	50	60	20	380	152
250	ECB	BZH250WSRERGBJM20	50	60	20	500	200

*PAH-free rubber to conform to EU-directive 2005/69/

Wheel Retainers



Axle Diameter (mm)	Code
15	WRDM15
20	WRDM20
25	WRDM25



ELASTIC RUBBER WCR / WCUBJ SERIES



140-1020kg



100-300mm



75 Shore A
Black Elastic Rubber
On Cast Iron

-20°C to +60°C
Max Speed 4kph



65 Shore A
Speed Black High
Elastic Rubber
On Cast Iron

-30°C to +80°C
Max Speed 20kph

Dia (mm)	Bearing	Code	Tread (mm)	Hub (mm)	Bore (mm)	Load (kg)	Bearing	Code	Tread (mm)	Hub (mm)	Bore (mm)	Load 4kph (kg)	Load 20kph (kg)
100		BZMH100WCRBJM20	38	45	20	160	-	-	-	-	-	-	-
		BZH100WCRBJM20	50	60	20	210	-	-	-	-	-	-	-
125		BZMH125WCRBJM20	38	45	20	190	-	-	-	-	-	-	-
		BZH125WCRBJM20	50	60	20	300	-	-	-	-	-	-	-
150		BZMH150WCRBJM20	50	50	20	300		BZH150WCUBJM20	50	60	20	400	140
		BZH150WCRM20	50	60	20	350	-	-	-	-	-	-	-
		BZH150WCRBJM20	50	60	20	350	-	-	-	-	-	-	-
200		BZMH200WCRBJM20	50	50	20	370		BZHL200WCUBJM20	50	60	20	500	175
		BZHL200WCRM20	50	60	20	450		BZH200WCUBJM25	75	83	25	650	228
		BZHL200WCRBJM20	50	60	20	450	-	-	-	-	-	-	-
		BZH200WCRBJM25	60	60	25	600	-	-	-	-	-	-	-
250		BZHL250WCRBJM25	50	60	25	500		BZHL250WCUBJM25	50	60	25	550	190
		BZXXH250WCRBJM30	100	108	30	1020		BZH250WCUBM25	75	83	25	800	280
300	-	-	-	-	-	-		BZH300WCUBJM25	75	83	25	850	300

*PAH-free rubber to conform to EU-directive 2005/69/EC

SPEED WHEELS

CUBJ high quality elastic rubber with permanent bond offers the user many benefits and outstanding qualities...

- High quality elastic rubber 65 Shore A for greater shock absorbency
- Tread permanently bonded to cast iron core
- Protects both floors and loads at the same time
- Low rolling resistance and quiet operation
- Sealed, high quality ball bearings
- Suitable for manual or mechanical operation

ELASTIC RUBBER WMKCU SERIES



65 Shore A
Speed Black Elastic
Rubber On Steel

-20°C to +60°C
Max Speed 25kph

Dia (mm)	Bearing	Tyre Wall Size (mm)	Code	Tread (mm)	Hub (mm)	Bearing Face to Face (mm)	Bore (mm)	Load 4kph (kg)	Load 25kph (kg)
250	☐	3.00 X 4	BZWWMK/CU250BJM25W	84	75	63	25	450	195
306	☐	4.00 X 4	BZWWMK/CU300BJM25W	93	75	63	25	700	410
406	☐	4.00 X 8	BZWWMK/CU400BJM25W	104	100	100	25	950	730
457	☐	5.00 X 8	BZWWMK/CU460BJM25W	122	100	100	25	1450	1090

FEATURES

- Unique tread design for improved traction and low rolling resistance
- Soft-resilio layers for increased driving comfort and reduced equipment maintenance
- High durometer hard-base compound for lower deflection and excellent stability
- Optimum interference fit base for secure fitment
- Speciality versions on request including non-marking, heat-resistant, oil-resistant, anti-static, aqua-grip, sub-zero, cut-resistant, anti-abrasive, anti-skid tyres, etc...
- Tyres designed as per T&RA & ETRTO standards



Request Our Specialist Rubber Catalogue

Specialist rubber castors & wheels

designed for speed and heavy duty applications

BIL Castors & Wheels

HIGH QUALITY PERFORMANCE

Up to five times more durable than pneumatic

- **Wear-resistant tread** increased stability and wider footprint
- **Cushion rubber centre** shock-resistant elastic soft resilio rubber compound
- **Durable hard rubber base** increases lifespan and improves ride quality
- **NO MORE FLAT TYRES!**