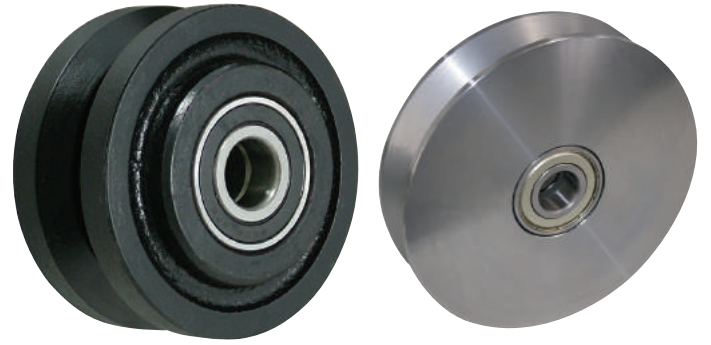




**BESPOKE MACHINING**  
**SPECIALIST WHEELS MADE TO ORDER**  
**STEEL, STAINLESS STEEL OR NYLON**  
**...FOR ANY APPLICATION**

**Available from Merlin Industrial Products - 01752 690622 - [sales@mipl.uk](mailto:sales@mipl.uk)**

# V-GROOVE WCV / WSV SERIES



100-1000kg



50-200mm

Dia (mm)	Bearing	Code	Tread (mm)	Width of Groove (mm)	Depth of Groove (mm)	Hub (mm)	Cast Iron V Groove			Bearing	Code	Tread (mm)	Width of Groove (mm)	Depth of Groove (mm)	Hub (mm)	Steel V Groove	
							Bore (mm)	Load (kg)	Max Speed (kph)							Bore (mm)	Load (kg)
50	-	-	-	-	-	-	-	-	-	ECB	BZH50WSVBJM10	18	12	7	18	10	100
75	ECB	BZH75WCVRB191	35	22	11	45	19.1	200	-30°C to +80°C Max Speed 4kph	ECB	BZH75WSVBJM12	22	16	8	22	12	135
100	ECB	BZH100WCVBJM20	50	22	11	60	20	360	-30°C to +80°C Max Speed 4kph	ECB	BZH100WSVBJM15	24	18	9	24	15	300
	-	-	-	-	-	-	-	-		ECB	BZXH100WSVBJM15	40	20	9	40	15	600
120	-	-	-	-	-	-	-	-	-30°C to +80°C Max Speed 4kph	ECB	BZH120WSVBJM20	33	25	11	33	20	600
125	ECB	BZH125WCVBJM20	50	22	11	60	20	675	-30°C to +80°C Max Speed 4kph	ECB	BZH125WSVBJM20	50	25	11	50	20	1200
150	ECB	BZ150WCVBJM20	50	32	15	60	20	700	-30°C to +80°C Max Speed 4kph	ECB	BZH150WSVBJM20	33	25	11	33	20	800
200	ECB	BZH200WCVBJM20	50	22	11	60	20	900	-30°C to +80°C Max Speed 4kph	ECB	BZH200WSVBJM20	33	25	11	33	20	1000

(High temp bearings available on request)

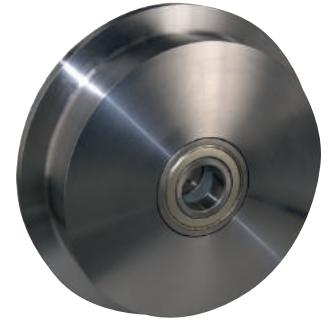
# FLANGED WCSF / WSSF SERIES



500-7000kg



50-300mm



Cast Iron Flanged										Steel Flanged							
Dia (mm)	Bearing	Code	Dia Inc Flange (mm)	Tread Minus Flange (mm)	Tread Inc Flange (mm)	Hub (mm)	Bore (mm)	Load (kg)	Bearing	Code	Dia Inc Flange (mm)	Tread Minus Flange (mm)	Tread Inc Flange (mm)	Hub (mm)	Bore (mm)	Load (kg)	
																	-30°C to +80°C Max Speed 4kph
50	-	-	-	-	-	-	-	-	ECB	BZH50WSSFBJM15	62	30	40	40	15	500	
75	-	-	-	-	-	-	-	-	ECB	BZH75WSSFBJM20	100	30	40	40	20	800	
100	ECB	BZH100WCSFBJM20	125	38	50	50	20	800	ECB	BZH100WSSFBJM25	125	40	50	50	25	1200	
125	ECB	BZH125WCSFBJM20	145	38	50	50	20	900	ECB	BZH125WSSFBJM25	150	40	50	50	25	1500	
150	ECB	BZH150WCSFBJM20	180	38	50	50	20	1000	ECB	BZH150WSSFBJM30	180	48	60	60	30	2000	
200	ECB	BZH200WCSFBJM25	230	46	58	58	25	1500	ECB	BZH200WSSFBJM35	240	48	60	60	35	2500	
250	-	-	-	-	-	-	-	-	ECB	BZH250WSSFBJM45	290	60	75	75	45	4000	
300	-	-	-	-	-	-	-	-	ECB	BZH300WSSFBJM60	345	72	90	90	60	7000	

(High temp bearings available on request)