

Product information

One of the most popular seating fabrics in the Camira collection which has sold over 30 million metres since launch. Available in an extensive colour palette, this versatile plain weave fabric gives a smart appearance to most seating styles.

Contact	
UK Head Office:	+44 (0)1924 490491
Germany:	+49 7031 60 84 30
Scandinavia:	+45 32 55 20 01
France/Benelux:	+32 56 227 266
USA:	+1 616 288 0655
China:	+ 86 (0) 21 6133 1812

www.camirafabrics.com



Technical information

UK

Composition

67% Wool,
20% Flame Retardant Viscose
13% Viscose

Width

130cm minimum

Weight

425g/m² ±5% (550g/lin.m ±5%)

Abrasion Resistance

5 year guarantee / 75,000 Martindale cycles (full details available)

Flammability

BS EN 1021 - 1:2014 (cigarette)
BS EN 1021 - 2:2014 (match)
BS 7176:2007 Low Hazard
BS 5852:2006 Section 4 Ignition Source 5
BS 7176:2007 Medium Hazard
Note: Flammability performance is dependent on foam used.

Light Fastness

5 (ISO 105 - B02:2014)

Fastness to Rubbing

Wet: 3/4, Dry: 4 (ISO 105 - X12:2002)

Cleaning

Vacuum regularly. Professionally dry clean or wipe clean with a damp cloth.

Please note that seam performance is dependent on seam construction and needle and thread type. We recommend that appropriate sewing advice be taken.

Note: Batch to batch variations in shade may occur within commercial tolerances. We reserve the right to alter technical specifications without notice. The Unregistered Design Rights and the Copyright in all designs are the exclusive property of Camira Fabrics Limited.

D

Zusammensetzung

67% Schurwolle,
20% schwerentflammbare Viskose
13% Viskose

Breite

130cm nutzbare Breite

Gewicht

425g/m² ±5% (550g/lfd.M ±5%)

Scheuerfestigkeit

5 Jahre Garantie / 75,000 Martindale Scheuertouren (Details auf Anfrage)

Feuersicherung

BS EN 1021 - 1:2014 (Zigarettentest)
BS EN 1021 - 2:2014 (Streichholztest)
BS 7176:2007 Low Hazard
BS 5852:2006 Section 4 Ignition Source 5
BS 7176:2007 Medium Hazard
Bemerkung: Schwerentflammbarkeit hängt von verwendetem Schaum ab.

Lichtechtheit

5 (ISO 105 - B02:2014)

Reißebehtheit

Nass: 3/4, Trocken: 4 (ISO 105 - X12:2002)

Reinigung

Regelmässig absaugen. Professionelle Trockenreinigung. Alternativ dazu mit einem feuchten Tuch abwischen.

Eine optimale Nahtausreissfestigkeit hängt von der Nahtfahne, der verwendeten Nadel und dem Näh-Garn ab. Wir empfehlen daher Nähversuche durchzuführen.

Wichtig: Handelsübliche Farbabweichungen können auftreten und berechtigen nicht zur Reklamation. Wir behalten uns die Änderung technischer Spezifikationen vor. Die registrierten und nicht registrierten Urheberrechte der Dessinierungen sind ausschliessliches Eigentum der Camira Fabrics Limited.

F

Composition

67% Laine,
20% Viscose retardeur de flamme
13% Viscose

Largeur

130cm minimum

Poids

425g/m² ±5% (550g/m.l ±5%)

Résistance à l'abrasion

Garantie de 5 ans / 75,000 Martindale tours (renseignements complémentaires disponibles)

Flammabilité

BS EN 1021 - 1:2014 (cigarette)
BS EN 1021 - 2:2014 (allumette)
BS 7176:2007 Low Hazard
BS 5852:2006 Section 4 Ignition Source 5
BS 7176:2007 Medium Hazard
Notez: Réaction au feu dépend de la mousse utilisée.

Solidité à la lumière

5 (ISO 105 - B02:2014)

Solidité au Frottement

Mouillé: 3/4, Sec: 4 (ISO 105 - X12:2002)

Nettoyage

Aspirer régulièrement. Nettoyage à sec professionnel. Autrement, essuyer avec un tissu humide.

Veillez noter que la performance du joint dépend de sa construction ainsi que de l'aiguille et du type de fil utilisés.

Remarque: une variation de couleurs peut provenir (commerciallement tolérable). Nous réservons le droit de changer les spécifications techniques sans préavis. Les Droits de Conception non-enregistrés et les droits d'auteur de tous les motifs sont la propriété exclusives de Camira Fabrics Limited.

ES

Composición

67% Lana,
20% Viscosa resistente al fuego
13% Viscosa

Ancho

130cm mínimo

Peso

425g/m² ±5% (550g/lin.m ±5%)

Resistencia a la abrasión

Garantía de uso 5 años / 75,000 Martindale ciclos (más información disponible bajo consulta)

Inflamabilidad

BS EN 1021 - 1:2014 (cigarillo)
BS EN 1021 - 2:2014 (cerilla)
BS 7176:2007 Low Hazard
BS 5852:2006 Section 4 Ignition Source 5
BS 7176:2007 Medium Hazard
Condiciones ignifugas dependientes del tipo de foam utilizado.

Solidez a la luz

5 (ISO 105 - B02:2014)

Solidez al rozamiento

Húmedo: 3/4, Seco: 4 (ISO 105 - X12:2002)

Limpieza

Limpiar con aspirador con regularidad. Limpiar en seco, o bien lavar con un paño húmedo.

Tenga en cuenta que el rendimiento de la costura depende de la construcción de la costura, además de la aguja y del tipo de rosca. Le recomendamos que se aconsejen para coser la costura.

Nota: las variaciones de lote a lote en la sombra se puede producir dentro de tolerancias comerciales. Nos reservamos el derecho a efectuar modificaciones técnicas sin previo aviso. Los derechos sobre los diseños no registrados y los derechos de autor en todos los diseños son propiedad exclusiva de Camira Fabrics Limited.

camira

style with substance

www.camirafabrics.com

Main Line Plus



Task seating



Soft seating



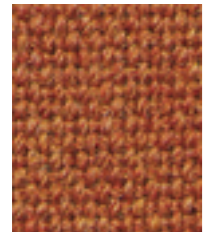
Cigarette & Match



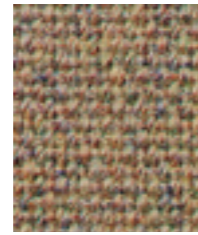
Medium Hazard



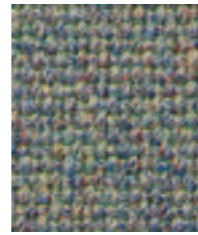
Year guarantee



Marmalade
IF142



Brindle
IF056



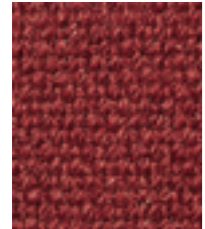
Prism
IF057



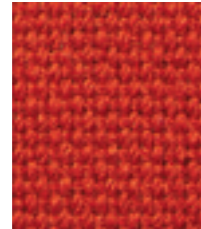
Wedgwood
IF027



Lead
IF058



Terracotta
IF046



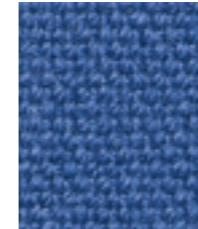
Celtic
IF120



Mermaid
IF231



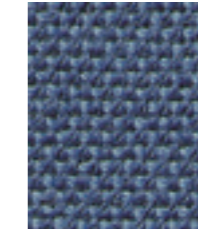
Aquamarine
IF141



Corinth
IF089



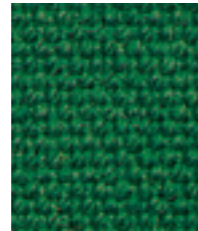
Bluenote
IF149



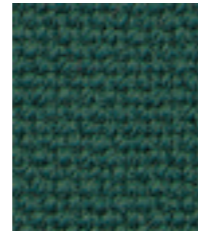
Tuscany
IF241



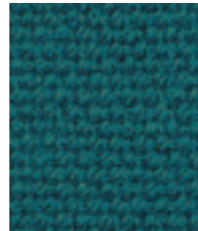
Crimson
IF116



Juniper
IF084



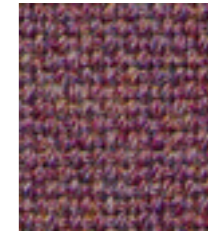
Teal
IF240



Trident
IF135



Clipper
IF111



Tulip
IF237



Matador
IF272



Red
IF011



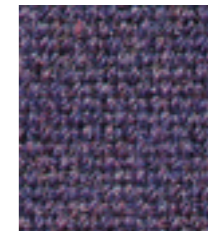
Forest
IF094



Triumph
IF275



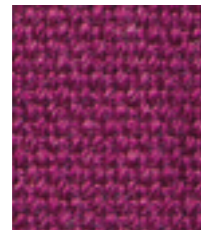
Dewberry
IF148



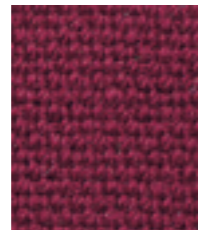
Penstemon
IF147



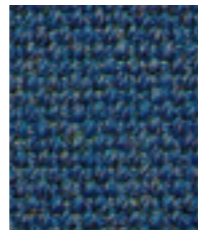
Carbon
IF252



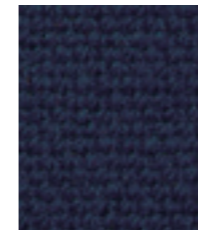
Morum
IF128



Claret
IF033



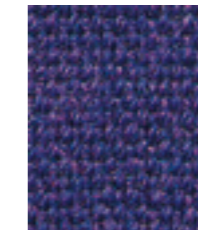
Cressida
IF112



Royal
IF020



Ink
IF129



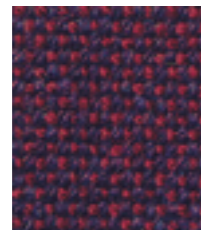
Prudence
IF250



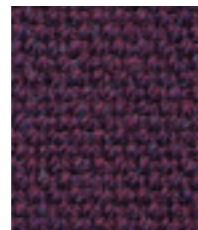
Girder
IF276



Ruby
IF101



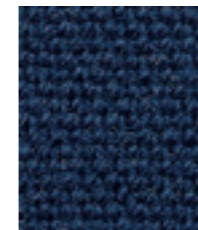
Wine
IF019



Bellis
IF113



Fjord
IF083



Twilight
IF075



Mahonia
IF114



Charcoal
IF000



Black
IF059