

## newton<sup>®</sup> REFLEX

### Ergonomic, versatile and reliable

Newton is the perfect combination of ergonomics, safety and functional design. The lifting mechanism and cables are well protected, and the simple operating device is positioned at a convenient working height. Rounded shapes and high-quality material make Newton versatile to manoeuvre and easy to keep clean.

The Reflex lifters have been specially designed to withstand tough tasks in all kinds of environments. The Reflex models are made of stainless steel and particularly resistant to chemicals.



**LIFTING TROLLEY  
NEWTON 50**

The smallest, but yet robust lifting trolley for handling goods up to 50 kg. Very suitable for lifting assistance in tight spaces.



**LIFTING TROLLEY  
NEWTON 70**

Designed on the basis of professional demands for versatility and function. A small but sturdy lifter that is simple to use for loads of up to 70 kg.



**LIFTING TROLLEY  
NEWTON 100**

Working efficiently involves working safely and comfortably. Use the Newton 100 to handle goods weighing up to 100 kg.



**LIFTING TROLLEY  
NEWTON 150**

Need to lift even more? Then have a look at the Newton 150 – a versatile and reliable lifter suitable for most industries and environments.



**LIFTING TROLLEY  
NEWTON 250**

For the really heavy goods, our efficient Newton 250 is really a helpful lifter. Lifts a lot, but still manageable.



**LIFTING TROLLEY  
REFLEX 200**

A powerful unit for quick lifts of up to 200 kg. And completely stainless.



**LIFTING TROLLEY  
REFLEX 75 STAINLESS IP 54**

The stainless steel version for more demanding environments! Safety class IP 54. Lifts up to 75 kg.



**ROLLTURNER**

An expander for turning rolls of material back and forth between vertical and horizontal positions.



**MILK PLATFORM**

Simple and convenient handling in the kitchen. Easily lifts 20-litre packs of milk for instance.



**STAINLESS STEEL PANEL**

A removable stainless steel panel can easily replace the standard plastic platform.



**FOLD-AWAY PLATFORM**

A combination of a fold-away platform and a fork for canteens or trays, for example, greatly expanding the area of use of the lifter.



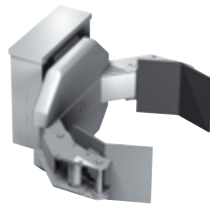
**FORK**

A versatile unit for both pallets and cylindrical objects.



**SINGLE BAR**

Rolls, tyres, sacks ... Lifts everything with a hole or a hook.



**GRIP AND ROTATE UNIT**

Lifts and turns large buckets, gas cylinders and other cylindrical items.



**V-BLOCK FOR ROLLS**

The V-block is ideal for safely handling rolls of material. The block can also be rotated to different positions.



**PALLET**

Profiled and corrugated loading panel of 3 mm aluminium. Full pallets can be dealt with from all four sides by the truck. Half pallets are lifted from the long side. The recommended max. load for a full pallet is 1,500 kg from the floor and 1,000 kg when stacked.