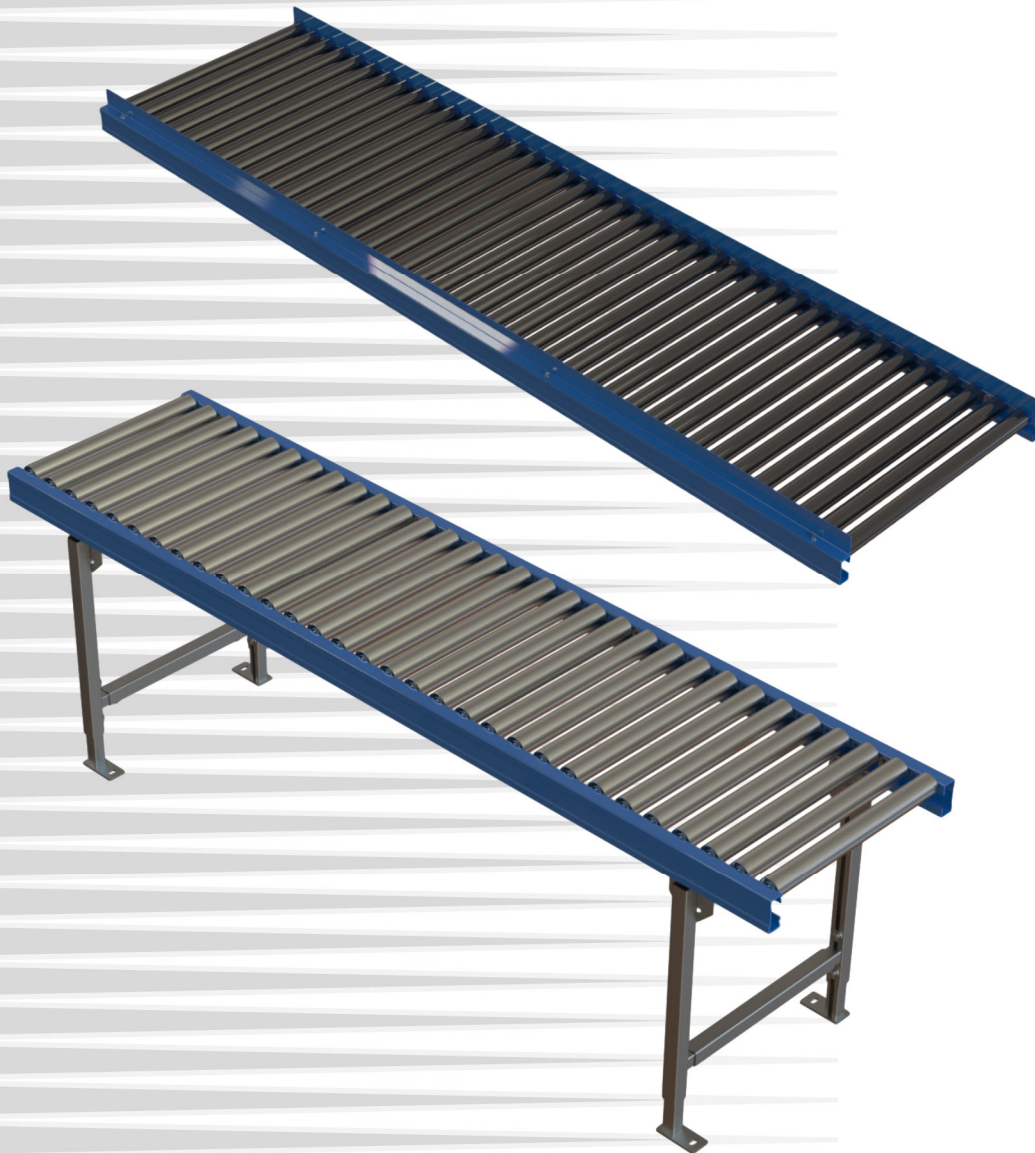


Speedtrack ST700

- ⇒ Gravity Roller Conveyor
- ⇒ Powder coated mild steel Smoothline frame
- ⇒ PVC or bright zinc plated mild steel rollers
- ⇒ Bright zinc plated mild steel stands



2019 Price List

the versatile conveyor company

ST731— Ø30mm Grey PVC Rollers - 12kg Rating

Roller Pitch							
Width	50mm	75mm	100mm	125mm	150mm	45° Bend	90° Bend
300	£125.87	£98.31	£85.29	£77.47	£72.23	£399.96	£553.89
400	£131.38	£102.13	£88.27	£79.94	£74.37	£406.17	£565.71
450	£134.13	£104.04	£89.76	£81.18	£75.43	£409.27	£586.23
500	£136.88	£105.95	£91.25	£82.42	£76.50	£412.38	£592.14

ST741— Ø40mm Grey PVC Rollers - 15kg Rating

Roller Pitch							
Width	50mm	75mm	100mm	125mm	150mm	45° Bend	90° Bend
300	£127.82	£99.61	£86.26	£78.25	£72.88	£386.31	£526.59
400	£133.57	£103.59	£89.36	£80.82	£75.10	£391.45	£536.27
450	£136.44	£105.58	£90.91	£82.11	£76.20	£394.02	£555.73
500	£139.32	£107.57	£92.47	£83.39	£77.31	£396.59	£560.57

ST751— Ø50mm Black PVC Rollers - 20kg Rating

Roller Pitch						
Width	75mm	100mm	125mm	150mm	45° Bend	90° Bend
300	£104.33	£89.81	£81.09	£75.24	£378.01	£509.99
400	£109.77	£94.00	£84.53	£78.18	£383.40	£520.17
450	£112.49	£96.10	£86.25	£79.65	£386.09	£539.87
500	£115.21	£98.19	£87.97	£81.13	£388.79	£544.96
600	£120.65	£102.38	£91.42	£84.07	£394.18	£555.14
700	£126.08	£106.58	£94.86	£87.01	£399.57	£565.32

ST761— Ø60mm Grey PVC Rollers - 60kg Rating

Roller Pitch						
Width	75mm	100mm	125mm	150mm	45° Bend	90° Bend
300	£135.04	£112.84	£99.51	£90.58	£388.26	£530.48
400	£140.80	£117.28	£103.15	£93.69	£392.75	£538.86
450	£143.68	£119.50	£104.97	£95.24	£394.99	£557.67
500	£146.57	£121.72	£106.79	£96.79	£397.24	£561.86
600	£152.33	£126.16	£110.43	£99.90	£401.73	£570.24
700	£158.10	£130.59	£114.07	£103.00	£406.22	£578.61
750	£161.21	£133.04	£116.12	£104.78	£408.91	£583.40

- ⇒ Prices shown are per running metre, length supplied will be a multiple of the roller pitch, surcharges apply for lengths other than 3,000mm lengths
- ⇒ Support stands recommended at 1.5m intervals
- ⇒ Framework powder-coated BS 4800 18-E-53
- ⇒ Alternative colours available, please contact our sales office.



ST733— Ø30mm BZP Steel Rollers - 50kg Rating

Width	Roller Pitch						
	50mm	75mm	100mm	125mm	150mm	45° Bend	90° Bend
300	£168.90	£126.99	£106.81	£94.68	£86.56	£445.15	£644.26
400	£176.87	£132.45	£111.02	£98.14	£89.52	£453.94	£661.25
450	£180.86	£135.18	£113.12	£99.87	£90.99	£458.34	£684.36
500	£184.84	£137.92	£115.23	£101.60	£92.47	£462.74	£692.86
600	£192.81	£143.38	£119.44	£105.06	£95.42	£471.53	£709.85

ST743— Ø40mm BZP Steel Rollers - 80kg Rating

Width	Roller Pitch						
	50mm	75mm	100mm	125mm	150mm	45° Bend	90° Bend
300	£164.33	£123.94	£104.52	£92.86	£85.04	£415.52	£585.01
400	£174.27	£130.72	£109.72	£97.10	£88.65	£424.01	£601.40
450	£179.24	£134.11	£112.31	£99.22	£90.45	£428.26	£624.20
500	£184.21	£137.49	£114.91	£101.35	£92.26	£432.51	£632.40
600	£194.15	£144.27	£120.11	£105.59	£95.87	£441.00	£648.78
700	£204.09	£151.04	£125.30	£109.84	£99.48	£449.49	£665.16

ST753— Ø50mm BZP Steel Rollers - 80kg Rating

Width	Roller Pitch					
	75mm	100mm	125mm	150mm	45° Bend	90° Bend
300	£124.65	£105.05	£93.28	£85.39	£396.29	£546.56
400	£131.65	£110.41	£97.66	£89.11	£403.09	£559.55
450	£135.15	£113.09	£99.85	£90.97	£406.49	£580.67
500	£138.65	£115.78	£102.04	£92.84	£409.89	£587.17
600	£145.65	£121.14	£106.42	£96.56	£416.69	£600.16
700	£152.65	£126.51	£110.80	£100.28	£423.49	£613.16
750	£156.38	£129.41	£113.22	£102.37	£427.34	£620.25

- ⇒ Prices shown are per running metre, length supplied will be a multiple of the roller pitch, surcharges apply for lengths other than 3,000mm lengths
- ⇒ Support stands recommended at 1.5m intervals
- ⇒ Framework powder-coated BS 4800 18-E-53
- ⇒ Alternative colours available, please contact our sales office.

Smoothline frames with bright zinc plated mild steel rollers

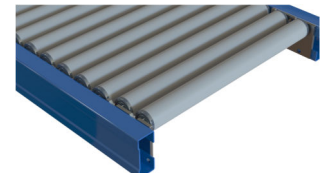
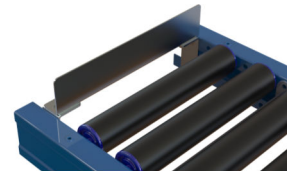
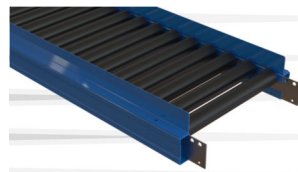
Stands

Stand Code	Foot Type	Height Range	Width to 750mm
M1	Footplate	450mm-650mm	£38.91
M2	Footplate	650mm-1,050mm	£44.37
M3	Footplate	900mm-1,500mm	£51.19
M1C	Swivel / Braked Castor	600mm-800mm	£50.30
M2C	Swivel / Braked Castor	800mm-1,200mm	£55.76
M3C	Swivel / Braked Castor	1,050mm-1,650mm	£62.59
M1F	Rubber Ferrule	450mm-650mm	£52.51
M2F	Rubber Ferrule	650mm-1,050mm	£57.97
M3F	Rubber Ferrule	900mm-1,500mm	£64.79

- ⇒ Diagonal kneed bracers (not for M1/M1C/M1F) £12 per stand
- ⇒ Upgrade from Ø100mm castors to Ø125mm heavy duty castors £13 per stand



Surcharge if length less than 1.5m	£29.00
Surcharge if length is between 1.5m and 3.0m	£22.00
End stop plate to 600mm wide	£30.00
End stop plate over 600mm wide	£36.00
End stop roller to 600mm wide	£36.00
End stop roller over 600mm wide	£39.00
Counterbalanced roller stop 3-600mm	£88.00 *
Counterbalanced roller stop >600mm	£98.00 *
Plate flip stop (600mm max width)	£46.00 *
Track joining plates	£20.00
Connecting hook & ferrule set	£36.00
Pop-out roller	£48.00
60mm angle side guide rail	£14.00/m
Add £8.00 surcharge if <3m	per side
Side guide cutting charge	£8.00
45° bend inner side guide rail	£65.00
45° bend outer side guide rail	£72.00
90° bend inner side guide rail	£72.00
90° bend outer side guide rail	£82.00



* Counterbalanced roller stop and plate flip stop only available for 75 mm & 150mm pitch

Pedestrian Access Gates

Access gates are gas strut assisted for ease of use Gate Mechanism (does not include conveyor) **£435.00**
 Lift up section nominally 1m long, must be 75mm pitch
 Minimum back section length 1,350mm, maximum 2,925mm
 A specific gate stand must be included at the pivot position, this stand includes a diagonal bracer and the height of this stand may dictate the run height

Where guides are fitted they must be chamfered at the pivot position **£10.00** per guide section, (i.e. 4 chamfers required for guides both sides).



Stand Code	Type	Foot Type	Height Range	Width to 750mm
M1GPP	Pivot Position Stand	Footplate	450mm-650mm	£57.80
M2GPP	Pivot Position Stand	Footplate	650mm-1,050mm	£60.94
M3GPP	Pivot Position Stand	Footplate	900mm-1,500mm	£69.50
L1GSW	Swing Down Stand	Rubber Ferrule	450mm-650mm	£60.00
L2GSW	Swing Down Stand	Rubber Ferrule	650mm-1,050mm	£65.00
L3GSW	Swing Down Stand	Rubber Ferrule	900mm-1,500mm	£70.00

Ball Transfer Platforms

		Ball Unit Pitch			
		75mm	100mm	125mm	150mm
Platform Length and Width	300mm	£446.74	£422.45	£ POA	£ POA
	400mm	£491.00	£459.74	£436.09	£ POA
	450mm	£535.51	£466.10	£445.57	£441.85
	500mm	£638.95	£600.63	£569.67	£545.30
	600mm	£763.88	£744.14	£612.23	£607.37
	700mm	£851.70	£740.64	£662.23	£630.98
	750mm	£1,025.96	£854.29	£809.19	£771.04

Twin Tier Supports

Stand Code	Height Range	Width to 750mm
TT-A	350mm-900mm	£94.59
TT-B	350mm-1,200mm	£98.23
TT-C	350mm-1,500mm	£101.87
TT-D	450mm-1,750mm	£104.91
Additional Tiers (per tier, per stand)		£22.00

