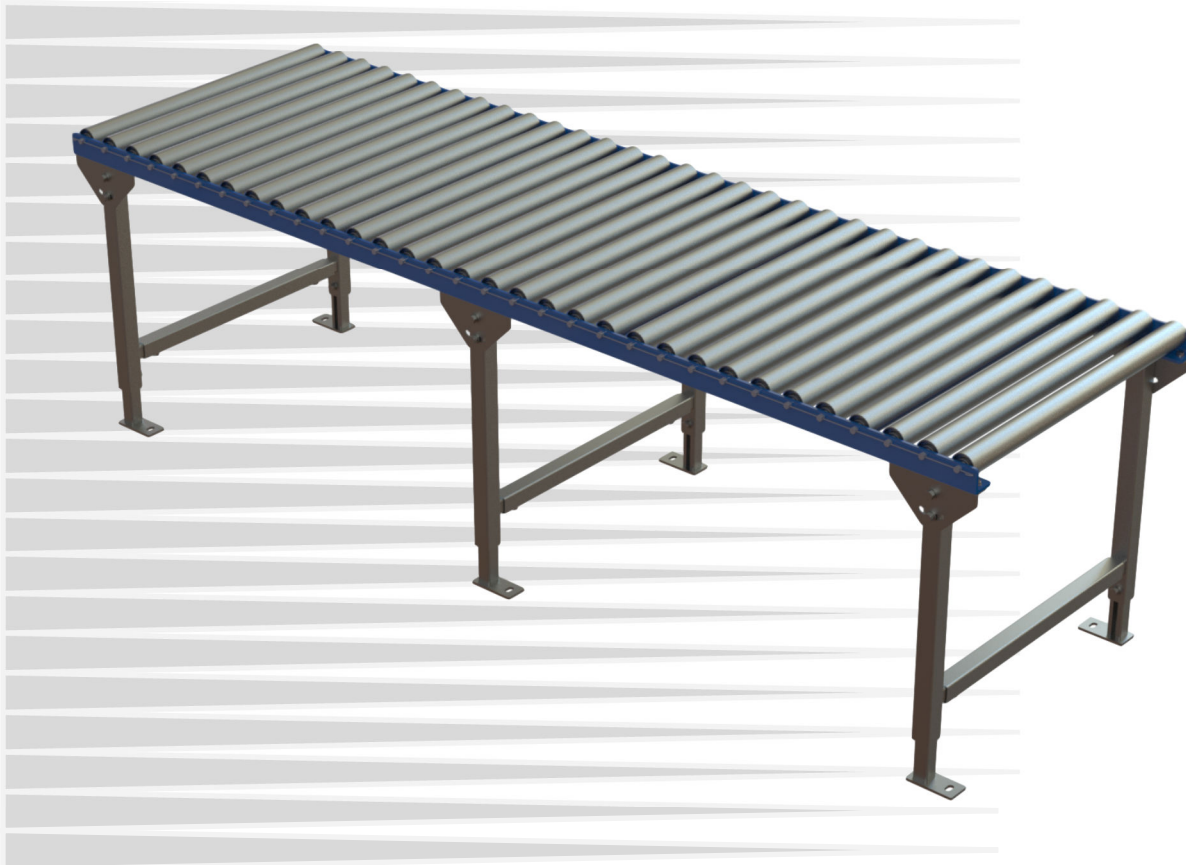


Speedtrack ST800

&

Speedtrack ST900

- ⇒ Gravity Roller Conveyor
- ⇒ Powder coated rolled steel angle frame
- ⇒ Heavy duty fully welded construction



2019 Price List

the versatile conveyor company

ST853— Ø50mm BZP Steel Rollers - 80kg Rating

Width	Roller Pitch							
	60mm	75mm	100mm	125mm	150mm	200mm	45° Bend	90° Bend
300	£182.54	£156.34	£130.14	£114.41	£103.87	£90.81	£402.53	£585.96
400	£192.81	£164.65	£136.49	£119.57	£108.24	£94.20	£410.50	£601.30
450	£198.05	£168.91	£139.76	£122.26	£110.53	£96.01	£414.69	£609.25
500	£203.30	£173.18	£143.05	£124.96	£112.84	£97.82	£418.92	£617.24
600	£215.45	£183.00	£150.56	£131.07	£118.02	£101.85	£428.36	£635.40
700	£225.85	£191.44	£157.04	£136.37	£122.53	£105.38	£436.60	£651.10
750	£233.17	£197.39	£161.62	£140.13	£125.74	£107.90	£442.47	£662.22
900	£253.26	£213.65	£174.03	£150.24	£134.30	£114.55	£458.07	£692.25

ST863— Ø60mm BZP Steel Rollers - 120kg Rating

Width	Roller Pitch						
	75mm	100mm	125mm	150mm	200mm	45° Bend	90° Bend
300	£175.94	£144.85	£126.17	£113.66	£98.16	£397.93	£576.76
400	£188.37	£154.28	£133.81	£120.09	£103.10	£406.92	£594.13
450	£194.69	£159.11	£137.73	£123.42	£105.68	£411.62	£603.10
500	£201.02	£163.94	£141.67	£126.75	£108.27	£416.35	£612.11
600	£214.97	£174.54	£150.26	£133.99	£113.84	£426.48	£631.65
700	£227.53	£184.11	£158.03	£140.56	£118.91	£435.74	£649.38
750	£235.54	£190.24	£163.03	£144.79	£122.21	£441.76	£660.81
900	£257.98	£207.29	£176.84	£156.45	£131.18	£458.08	£692.27

- ⇒ 50mm x 50mm x 6mm Rolled Steel Angle fully welded construction
- ⇒ Prices shown are per running metre, length supplied will be a multiple of the roller pitch,
- ⇒ Surcharges apply for lengths other than 3,000mm lengths
- ⇒ Support stands recommended at 1.5m intervals
- ⇒ Framework powder-coated BS 4800 18-E-53
- ⇒ Alternative colours available, please contact our sales office.

ST953— Ø50mm BZP Steel Rollers - 80kg Rating

Width	Roller Pitch							
	60mm	75mm	100mm	125mm	150mm	200mm	45° Bend	90° Bend
300	£190.96	£164.76	£138.56	£122.83	£112.29	£99.23	£415.57	£603.35
400	£201.45	£173.29	£145.13	£128.22	£116.89	£102.85	£423.99	£619.29
450	£206.78	£177.64	£148.50	£131.00	£119.27	£104.74	£428.36	£627.48
500	£212.14	£182.02	£151.89	£133.80	£121.68	£106.66	£432.80	£635.75
600	£224.49	£192.05	£159.61	£140.12	£127.07	£110.90	£442.66	£654.47
700	£235.09	£200.69	£166.28	£145.62	£131.77	£114.62	£451.29	£670.69
750	£242.53	£206.76	£170.98	£149.50	£135.10	£117.27	£457.40	£682.13
900	£262.93	£223.31	£183.70	£159.91	£143.96	£124.22	£473.60	£712.96

ST963— Ø60mm BZP Steel Rollers - 120kg Rating

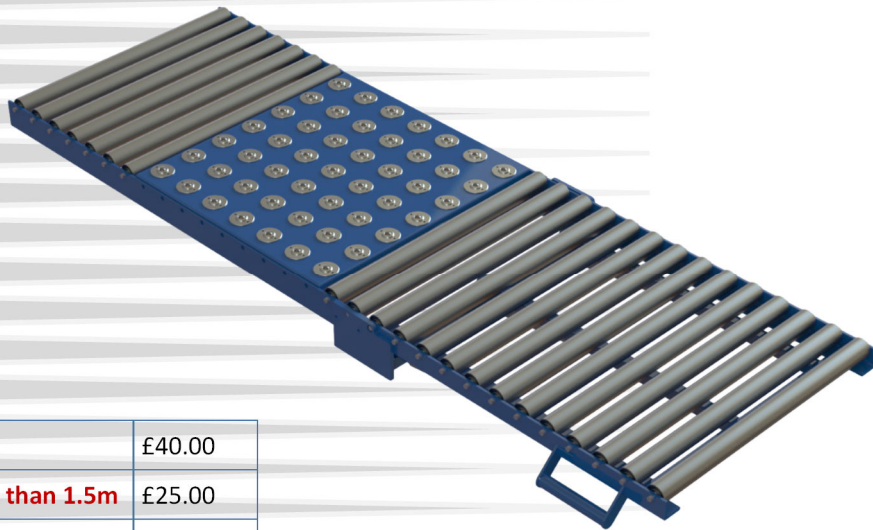
Width	Roller Pitch						
	75mm	100mm	125mm	150mm	200mm	45° Bend	90° Bend
300	£188.31	£156.72	£137.75	£125.04	£109.29	£433.21	£638.64
400	£200.96	£166.38	£145.61	£131.70	£114.46	£445.34	£662.00
450	£207.37	£171.29	£149.63	£135.11	£117.13	£451.57	£673.90
500	£213.81	£176.24	£153.67	£138.55	£119.82	£457.87	£685.88
600	£227.96	£187.04	£162.47	£146.00	£125.60	£471.43	£712.02
700	£240.72	£196.81	£170.43	£152.76	£130.87	£483.78	£735.66
750	£248.85	£203.05	£175.55	£157.12	£134.29	£491.74	£750.81
900	£271.59	£220.41	£189.67	£169.07	£143.56	£513.51	£792.77
1,100	£297.12	£239.95	£205.62	£182.61	£154.12	£538.22	£840.10
1,250	£320.27	£257.53	£219.84	£194.59	£163.31	£559.96	£882.49

- ⇒ 50mm x 50mm x 6mm Rolled Steel Angle fully welded construction
- ⇒ Prices shown are per running metre, length supplied will be a multiple of the roller pitch,
- ⇒ Surcharges apply for lengths other than 3,000mm lengths
- ⇒ Support stands recommended at 1.5m intervals
- ⇒ Framework powder-coated BS 4800 18-E-53
- ⇒ Alternative colours available, please contact our sales office.

Rolled angle frames with bright zinc plated mild steel rollers

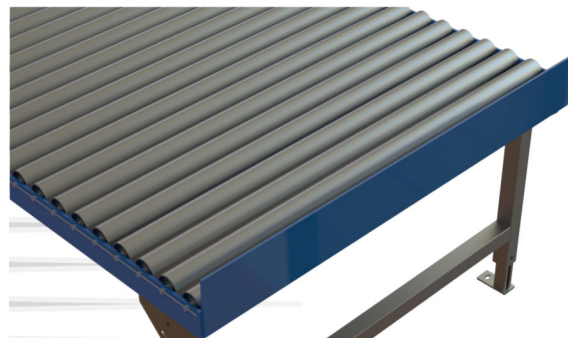
Stands

Stand Code	Foot Type	Height Range	Width to 750mm	Width over750mm
H1	Footplate	450mm-650mm	£45.51	£49.17
H2	Footplate	650mm-1,050mm	£50.82	£54.49
H3	Footplate	900mm-1,500mm	£57.47	£61.14



Accessories

End stop plate	£40.00
Surcharge if length less than 1.5m	£25.00
Surcharge if length is between 1.5m and 3.0m	£18.00
Assisted pedestrian gate (800 series only, Mechanism only)	£480.00
50mm flat side guide rail	£20.00/m per side
Add cutting charge if <3m	
45° bend inner side guide rail	£36.00
45° bend outer side guide rail	£45.00
90° bend inner side guide rail	£45.00
90° bend outer side guide rail	£60.00



⇒ For technical support, a quotation or if the conveyor or accessory that you require is not listed please contact our sales office: